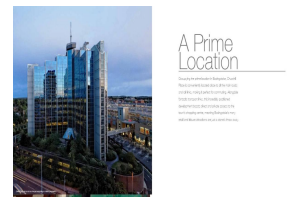
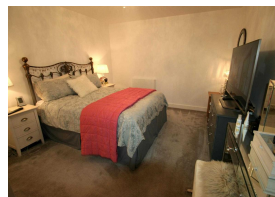
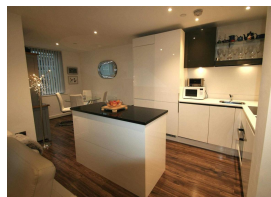
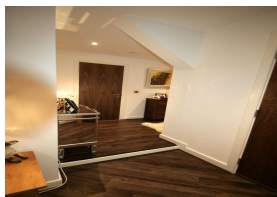
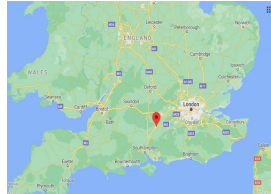
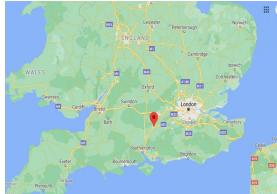


APARTMENT FOR SALE



	Bedrooms	1	Year Built	0
Basingstoke, Hampshire	Bathrooms		Date Listed	09/09/2024
United Kingdom	Size	68 Sq M	Listing ID	GL-1623296765
Asking Price	Listed by: Euro Resales			
€228,000	For more information, visit:			

<https://www.globallistings.com/5338790>

Overview

Stunning Modern One Bedroom Apartment, Basingstoke, Hampshire, England

*** Sterling Price = 200,000***

Euroresales Property ID - 9826162

PROPERTY LOCATION

101, Churchill Place,

Basingstoke,

Hampshire,

RG21 7AA

PROPERTY OVERVIEW

Thanks mainly to a winning combination of stunning natural scenery and excellent transport links, Basingstoke's reputation as an ideal place to live continues to grow. This fantastic apartment in the heart of the town offers up a fantastic opportunity for someone to make a smart investment into this wonderful area.

Located in the hub of the town's retail area, on the first floor of the Churchill Place apartment block, this magnificent property features 1 bedroom, 1 bathroom, spacious open plan design, parking spaces and many other excellent services linked to the building such as 24 hour concierge services, and an intercom service. In an era where we are all becoming more aware of how our lives affect the natural environment, this apartment complex is setting the standard with numerous eco-friendly designs and ideas such as thermal insulation, water efficient taps and showers and low energy LED lights. Not only are these features setting the standard we all need to follow in terms of environmental awareness, but they have the added benefit of huge savings on electricity and heating bills for the lucky owner.

This house not only offers a comfortable, spacious, and modern place to live but also the chance to venture into the lucrative and ever-growing holiday rental market, in which this region is unsurprisingly one of the fastest growing across England. Basingstoke is not only a wonderful area in itself but is also a great base from which to discover the endless other must-see places of this fascinating country including the iconic capital, London, which is just one hour away by car. As well as being surrounded by many excellent metropolitan areas, this property has the added advantage of being surrounded by countless areas of outstanding natural beauty including North Wessex Downs and The Cotswolds.

No discussion on things to do in England would be complete without discussing sports and this property is perfectly located to take advantage of the limitless famous venues to visit. Basingstoke itself is, as mentioned, surrounded by many excellent walking, cycling, water sports and fishing areas in the nearby scenic sites. Golf fans will be delighted by the many outstanding courses nearby including Weybrook Park Golf Club (just 3 miles away) and Basingstoke Golf Club (just 4 miles away).

Football fans will feel as though they've found paradise as the property is just 45 minutes away from the home stadium of English Premier League club Southampton and the area's closeness to London means it is also just a short drive away from many other Premier League clubs such as Arsenal, Chelsea, Tottenham, Fulham, West Ham and Crystal Palace, as well as a host of other clubs down in the lower leagues and the iconic Wembley Stadium.

London of course also offers a huge range of other iconic sporting venues nearby such as Twickenham, Lord's Cricket Ground and The Wimbledon Tennis Championships.

As if that wasn't enough, the area is also known as a hotbed for horseracing and is close to famous tracks such as Newbury, Windsor and Ascot.

The town is also very well-connected transport wise on the ground thanks to its close links with main roads

and in the air with Heathrow Airport just 38 miles away and Southampton Airport just 29 miles away. This is of course yet another massive draw in the context of the holiday rental/commuter markets.

ABOUT THE AREA

Occupying the prime location in Basingstoke, Churchill Place is conveniently located close to all the main roads and rail links, making it perfect for commuting. Alongside fantastic transport links, this incredibly positioned development boasts direct and private access to the town's shopping centre, meaning Basingstoke's many retail and leisure attractions are just a stone's throw away.

Luxury, exclusivity and an unrivalled location is the backbone of Churchill Place. Offering a range of quality apartments, Churchill Place is a onetime opportunity to own an exclusive piece of Basingstoke's landmark building.

Basingstoke is more than just a town, it's a destination. Nestled among the rolling hills and fields of the picturesque county of Hampshire, but within easy reach of London, Basingstoke offers the best of both city and rural living.

With more than 7,000 companies contributing millions to the local economy, low unemployment and a buoyant retail and leisure sector, Basingstoke is a town primed for future growth and development.

Festival Place, Basingstoke's main shopping centre, boasts more than 200 shops, 30 restaurants, bars and cafes, multi-screen cinema, sports centre, library and a nightclub.

More than 1 million people visit Basingstoke Leisure Park every year to enjoy the park's many attractions, from swimming and skydiving to skiing and ice-skating.

Just a few minutes' walk from the hustle and bustle of the town centre is Eastrop Park, an oasis of calm, with tree-lined promenades and its own boating lake. The area also features 11 secondary schools, 2 colleges and 65 primary schools.

If you're looking for a fantastic quality of life, look no further than Basingstoke. With hundreds of shops, bars, restaurants and cafes all within a short walk of Churchill Place, as well as theatres, a world-class concert hall, and sports and leisure facilities, the town really does offer something for everyone.

For a superb visual representation of the area, copy and paste the following link to your browser:

<https://youtu.be/GpZhTeFK2Ws>

MAIN FEATURES:

Located in a peaceful, well-run apartment building

One bedroom

One bathroom

68m² apartment

Spacious open plan design

Parking spaces

Many eco-friendly features

Many other excellent services linked to the building such as 24-hour concierge services and an intercom

Perfectly located at the heart of Basingstoke's main retail area

Also just a short distance from many areas of outstanding natural beauty including The Cotswolds and North Wessex Downs

Basingstoke known for low rates of unemployment

Excellent schools in the area

Huge potential in the fast-growing holiday rental market

Just one hour away from England's iconic capital, London

Surrounded by many excellent walking, cycling, water sports and fishing areas

Close to many fabulous golf courses including Weybrook Park Golf Club (<https://www.veybrookpark.co.uk>) and Basingstoke Golf Club (<http://www.basingstokegolfclub.co.uk>)

Proximity to London offers numerous options to see some of the best football teams in the world in the English Premier League. Also close to Premier League club Southampton.

Excellent Transport links

Just 38 miles from Heathrow Airport and 29 miles from Southampton Airport

Contact Euro Resales Ltd to book an inspection

Contact

Email

Phone

info@euroresales.com